



QUICK LOOK

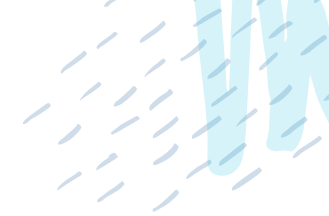
NDIS Price Guide

UPDATED: 1ST JULY 2022

Tweed Coast

Plan Management

HELP + EDUCATE + SUPPORT + EMPOWER



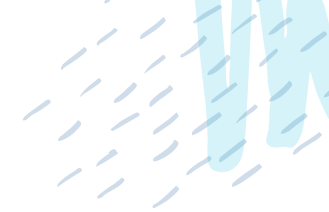
Core Supports

| Daily Activities (01) | | | |
|-----------------------|---|--------------|--------------|
| Line item | Service type | Current Rate | TTP standard |
| 01_011_0107_1_1 | Self-Care Activities - Standard - Weekday Daytime 6am – 8pm | 62.17 | 64.04 |
| 01_015_0107_1_1 | Self-Care Activities - Standard - Weekday Evening 8pm – 12pm | 68.50 | 70.56 |
| 01_013_0107_1_1 | Self-Care Activities - Standard - Saturday | 87.51 | 90.14 |
| 01_014_0107_1_1 | Self-Care Activities - Standard - Sunday | 112.85 | 116.24 |
| 01_012_0107_1_1 | Self-Care Activities - Standard - Public Holiday | 138.20 | 142.35 |
| | | | |
| 01_010_0107_1_1 | Night-Time Sleepover (8 hour period & can sleep, includes up to two hours of active supports) | 262.16 | N/A |
| 01_002_0107_1_1 | Assistance With Self-Care Activities - Standard - Weekday Night | 69.77 | 71.86 |
| | | | |
| 01_019_0120_1_1 | House or Yard Maintenance | 50.87 | N/A |
| 01_020_0120_1_1 | House Cleaning and Other Household Activities | 51.81 | N/A |
| | | | |
| 01_058_0115_1_1 | STA And Assistance (Inc. Respite) - 1:1 - Weekday | 1,928.20 | N/A |
| 01_059_0115_1_1 | STA And Assistance (Inc. Respite) - 1:1 - Saturday | 2,465.80 | N/A |
| 01_060_0115_1_1 | STA And Assistance (Inc. Respite) - 1:1 - Sunday | 3,124.12 | N/A |
| 01_061_0115_1_1 | STA And Assistance (Inc. Respite) - 1:1 - Public Holiday | 3,782.44 | N/A |

Social & Community Participation (04)

| Line item | Service type | Current Rate | TTP standard |
|-----------------|---|--------------|--------------|
| 04_104_0125_6_1 | Social & Community - Standard - Weekday Daytime 6am-8pm | 62.17 | 64.04 |
| 04_103_0125_6_1 | Social & Community - Standard - Weekday Afternoon 8pm-12pm | 68.50 | 70.56 |
| 04_105_0125_6_1 | Social & Community - Standard - Saturday | 87.51 | 90.14 |
| 04_106_0125_6_1 | Social & Community - Standard - Sunday | 112.85 | 116.24 |
| 04_102_0125_6_1 | Social & Community - Standard - Public Holiday | 138.20 | 142.35 |
| | | | |
| 04_049_0136_1_1 | Establishment Fee for Personal Care/Participation (once only) | 621.70 | N/A |
| | | | |
| 04_102_0136_6_1 | Group Activities - Standard - Weekday Daytime | 62.17 | 64.04 |
| 04_104_0136_6_1 | Group Activities - Standard - Saturday | 87.51 | 90.14 |
| 04_105_0136_6_1 | Group Activities - Standard - Sunday | 112.85 | 116.24 |
| | | | |
| 04_599_0136_6_1 | Centre Capital Cost For Group And Centre Based Activities | 2.28 | N/A |
| 04_591_0136_6_1 | Activity Based Transport | 1.00 | N/A |





Capacity Building Supports

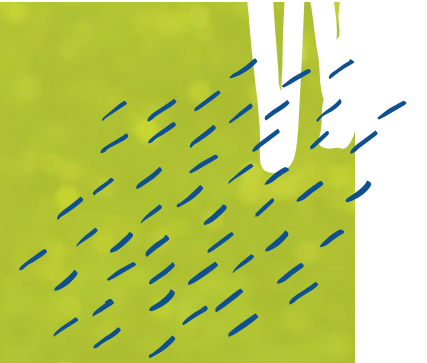
| Capacity Building Supports (07 - 15) | | |
|--------------------------------------|---|--------------|
| Line item | Service type | Current Rate |
| 07_002_0106_8_3 | Support Coordination | 100.14 |
| 11_022_0110_7_3 | Specialist Behavioural Intervention Support | 214.41 |
| 11_023_0110_7_3 | Planning & Training In Behaviour Management Strategies | 193.99 |
| 12_029_0126_3_3 | Personal training provided by a Personal Trainer to a participant | 59.81 |
| | | |
| 15_001_0118_1_3 | Early Childhood Intervention Support - Psychology | 214.41 |
| 15_003_0118_1_3 | Early Childhood Intervention Support - Physiotherapy | 193.99 |
| 15_005_0118_1_3 | Early Childhood Intervention Support - Other Therapy (eg, OT, Speech) | 193.99 |
| 15_037_0117_1_3 | Individual Skill Development And Training | 62.17 |
| 15_038_0117_1_3 | Training For Carers/Parents | 70.87 |
| | | |
| 15_043_0128_1_3 | Assessment Recommendation Therapy or Training - Counsellor | 156.16 |
| 15_052_0128_1_3 | Therapy Assistant - Level 1 | 56.16 |
| 15_053_0128_1_3 | Therapy Assistant - Level 2 | 86.79 |
| 15_054_0128_1_3 | Assessment, Therapy And/Or Training (Incl. AT) - Psychology | 214.41 |
| 15_055_0128_1_3 | Assessment, Therapy And/Or Training (Incl. AT) - Physiotherapy | 193.99 |
| 15_056_0128_1_3 | Assessment, Therapy And/Or Training (Incl. AT) - Other Professional | 193.99 |
| 15_062_0128_3_3 | Assessment Recommendation Therapy or Training - Dietitian | 193.99 |

Capacity Building Supports (07 - 15)

| | | |
|-----------------|--|--------|
| 15_610_0128_1_3 | Assessment Recommendation Therapy or Training - Art Therapist | 193.99 |
| 15_615_0128_1_3 | Assessment Recommendation Therapy or Training - Music Therapist | 193.99 |
| 15_617_0128_1_3 | Assessment Recommendation Therapy or Training - Occupational Therapist | 193.99 |
| 15_619_0128_1_3 | Assessment Recommendation Therapy or Training - Podiatrist | 193.99 |
| 15_621_0128_1_3 | Assessment Recommendation Therapy or Training - Social Worker | 193.99 |
| 15_622_0128_1_3 | Assessment Recommendation Therapy or Training - Speech Pathologist | 193.99 |
| 15_200_0126_1_3 | Exercise Physiology | 166.99 |
| | | |
| 15_400_0114_1_3 | Delivery of Health Supports by an Enrolled Nurse - Weekday Daytime | 89.17 |
| 15_406_0114_1_3 | Delivery of Health Supports by a Registered Nurse - Weekday Daytime | 110.40 |
| 15_412_0114_1_3 | Delivery of Health Supports by a Clinical Nurse - Weekday Daytime | 127.70 |
| 15_424_0114_1_3 | Delivery of Health Supports by a Nurse Practitioner - Weekday Daytime | 157.90 |



- + HELP
- + EDUCATE
- + SUPPORT
- + EMPOWER



accounts@tweedcoastplanmanagement.com.au

